



Front [West] Elevation
Scale 1:200

- Crystic fibreglass flat roof membrane to roof
- Double/triple glazed PVC windows in selected colour
- Selected plaster finish
- Smooth plaster plinth



Side [South] Elevations
Scale 1:200

- Crystic fibreglass flat roof membrane to roof
- Double/triple glazed PVC windows in selected colour
- Selected plaster finish
- Smooth plaster plinth

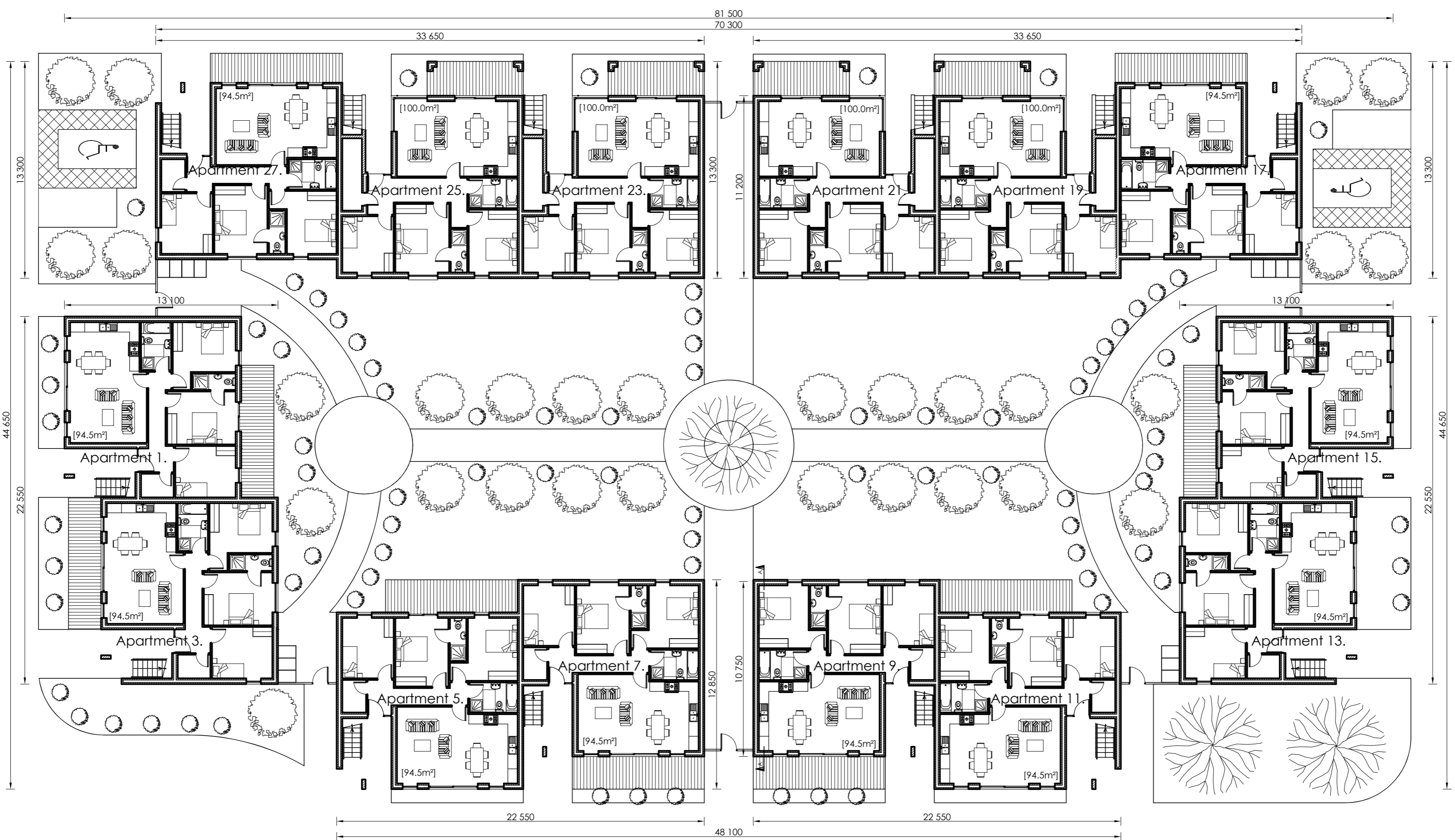


Side [North] Elevations
Scale 1:200

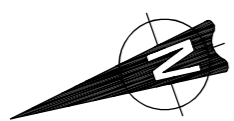


Rear [East] Elevation
Scale 1:200

- Crystic fibreglass flat roof membrane to roof
- Selected slate/tile to roof
- PVC fascia, soffit & guttering in selected colour
- Double/triple glazed PVC windows in selected colour
- Selected plaster finish
- Selected brick where indicated
- Smooth plaster plinth



Ground Floor Plan
Scale 1:200



- Type 'A' [Total Area = 3,219.0 m²]
- 4 no. 3-bed [100.0 m²] Apartment nos. 130, 132, 134 & 136
- 10 no. 3-bed [94.5 m²] Apartment nos. 112, 114, 116, 118, 120, 122, 124, 126, 128 & 138
- 4 no. 3-bed [93.5 m²] Apartment nos. 131, 133, 135 & 137
- 10 no. 4-bed [150.0 m²] Apartment nos. 113, 115, 117, 119, 121, 123, 125, 127, 129 & 139

Revision	Description	Date
 2021	GLEESON MCSWEENEY	
Project	Proposed residential development at Ballykeeffe, Raheen, Limerick. For: DW Raheen Developments Ltd.	Stage Planning
Title	Apartment Building Type A	Sheet 1 of 2
Scale	1:100 @ A1	Date December 2021
Drawn	M.M.	Rev 1704-10-122
		99 O'Connell St., Limerick T 061 412277 E info@gleesonmcsweeney.ie